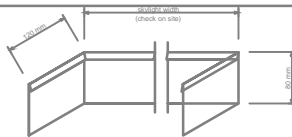


# VELUX GGL/GGU Roof Window installation guidelines for roofs with roof pitch less than 15 degrees

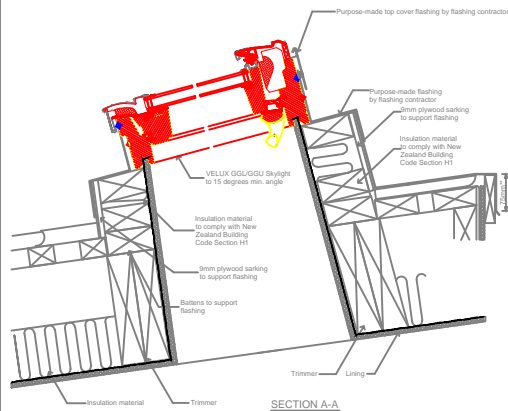
For roofs with roof pitches less than 15 degrees, the VELUX GGL/GGU Roof Window must be installed to a min 15 degrees.

A purpose-made flashing designed to meet the conditions set out in Section E2 of the New Zealand Building Code shall be manufactured and installed by a specialist flashing contractor. This flashing must be guaranteed against weather-tightness by the specialist flashing contractor.

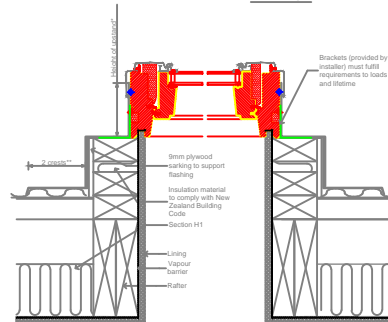
Insulation material meeting the requirements of NZBC:H1 is required in the cavities of the light well structure.



ELEVATION



SECTION A-A



SECTION B-B

## INSTALLATION GUIDELINES - GGL/GGU ROOF WINDOW IN METAL ROOFS (PITCH < 15 DEGREES)

This drawing is an instrument of service and is provided for informational use only.  
© 2014 VELUX GROUP

<b>VELUX</b>	<b>NEW ZEALAND LTD.</b>	0800 650 445
GGL/GGU - Roof Window in Metal Roof (pitch <15 degrees)		

© VELUX is a registered trademark